

**FARSIL 80****SILICE CRISTOBALITE**

CRISTOBALITE SILICA

**CARACTERISTIQUES PHYSIQUES**

PHYSICAL CHARACTERISTICS

<b>Blancheur / Whiteness</b>	<b>Y &gt; 88</b>
<b>Poids spécifique / Specific weight</b>	<b>2,3g / cm<sup>3</sup></b>
<b>Densité apparente / Apparent density</b>	<b>0,8g / cm<sup>3</sup></b>
<b>Dureté mohs / Hardness on mohs scale :</b>	<b>7 Mohs</b>
<b>pH /</b>	<b>9 à 9,5</b>
<b>Taux d'humidité / Humidity percentage</b>	<b>&lt; 0,2 %</b>

**ANALYSES CHIMIQUES**

CHEMICAL ANALYSIS

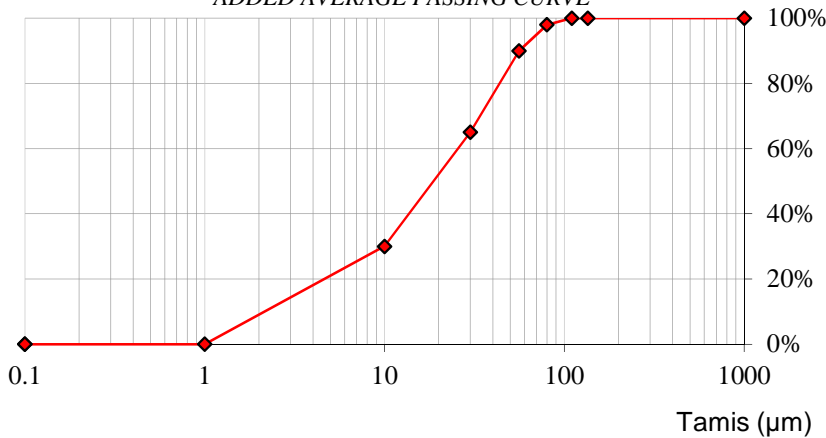
<b>SiO<sub>2</sub></b>	<b>99.20%</b>
<b>Al<sub>2</sub>O<sub>3</sub></b>	<b>0.12%</b>
<b>Fe<sub>2</sub>O<sub>3</sub></b>	<b>0.11%</b>
<b>MgO</b>	<b>0.01%</b>
<b>K<sub>2</sub>O</b>	<b>0.04%</b>
<b>CaO</b>	<b>0.24%</b>
<b>Na<sub>2</sub>O</b>	<b>0.06%</b>
<b>Perte au feu</b>	<b>0.16%</b>

**CONDITIONNEMENT**

PACKAGING

**Vrac / Bulk****Sacs 25kg / 25kg bags****Big bag de 1T250 : 1T250 bags****GRANULOMETRIE**

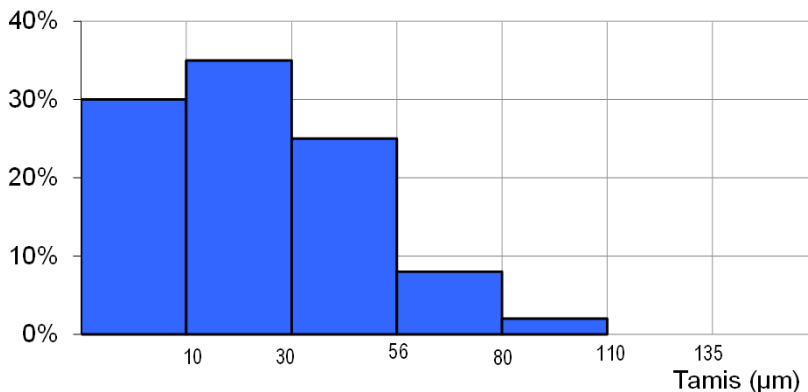
PARTICLE SIZE

**COURBE DES PASSANTS MOYENS CUMULES**  
ADDED AVERAGE PASSING CURVE**Tamissage AFNOR NF ISO P18-560**

Sifting AFNOR NF ISO P18-560

Tamis Sieve (µm)	Moyenne Average	Mini	Maxi
10	30%	20%	40%
30	65%	55%	75%
56	90%	85%	95%
80	98%	95%	100%
110	100%	99%	100%
135	100%	100%	100%

% en passants cumulés % added passing

**d<sub>50</sub> moyen = 21 µm****HISTOGRAMME DES PASSANTS**  
PASSING HISTOGRAM

Tamis Sieve (µm)	Passants par tamis
10-30	35%
30-56	25%
56-80	8%
80-110	2%
110-135	0%
> 135	0%